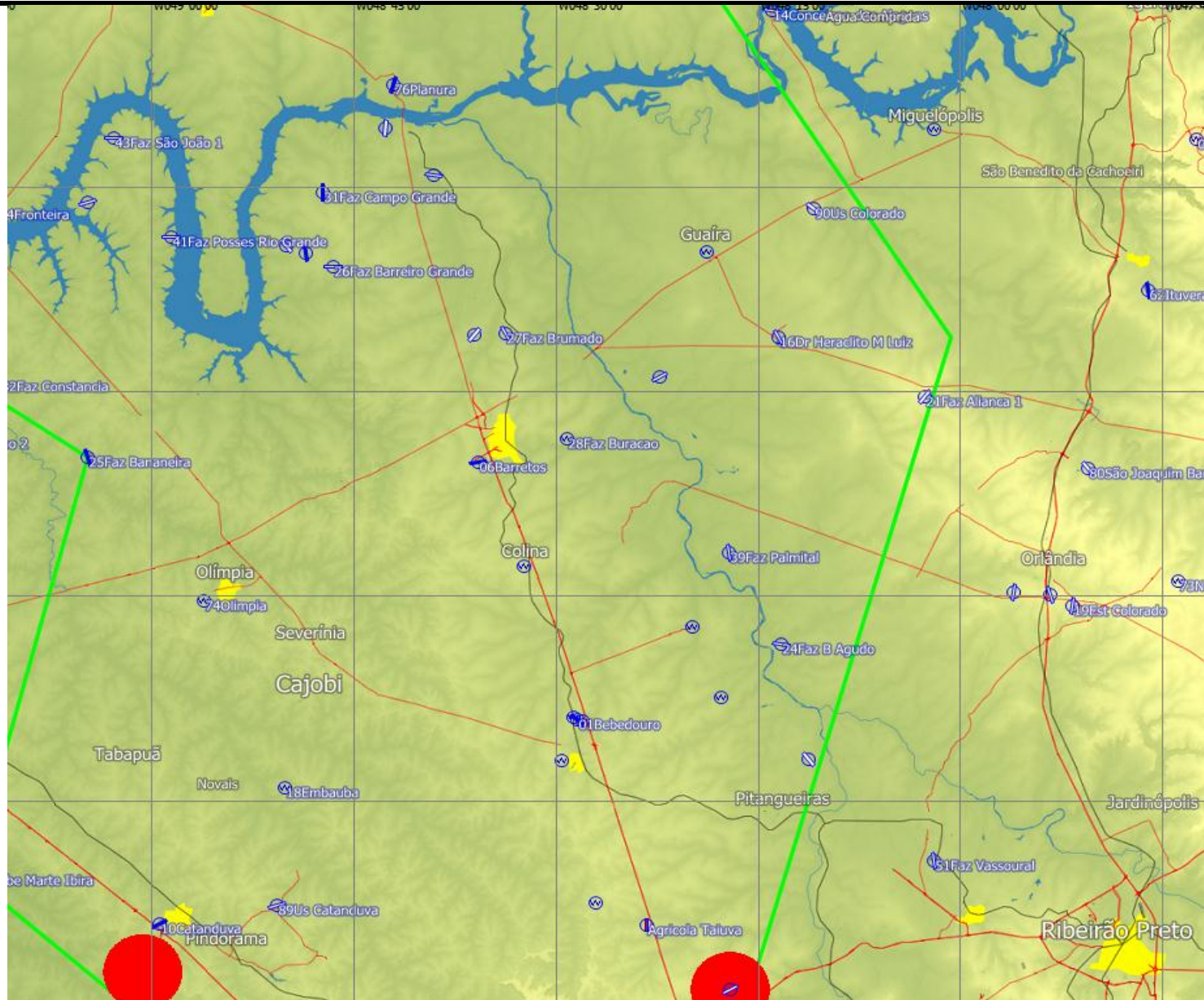


# Pistas e Aeródromo 2018



Ponto	Localização		Elevação	Dist	Orientação	Estilo	Codigo
	Lat	Long					
01Bebedouro	S20°54'01"	W048°28'24"	592m	106.9km	341°	Airport with Solid Runway	SDBB
04Aerogardi	S21°33'40"	W048°47'55"	537m	74.2km	292°	Airport with Grass Runway	SWXD
05Agrop Barrinha	S19°49'57"	W049°40'48"	439m	271.9km	323°	Airport with Grass Runway	SJSF
06Barretos	S20°35'08"	W048°35'45"	579m	144.0km	340°	Airport with Solid Runway	SBBT
10Catanduva	S21°09'02"	W048°59'25"	561m	115.1km	309°	Airport with Solid Runway	SDCD
11Chácara Serradinho	S21°15'53"	W048°21'24"	621m	64.8km	339°	Airport with Solid Runway	SDXE
12Clube Marte Ibirá	S21°05'29"	W049°13'27"	485m	138.3km	305°	Airport with Grass Runway	SWYV
14Conceicao das Alagoas	S20°02'02"	W048°14'02"	558m	197.1km	357°	Airport with Grass Runway	SNVG
15Campo Florido	S19°49'00"	W048°44'23"	594m	229.7km	344°	Airport with Solid Runway	SNLF
16Dr Heraclito M Luiz	S20°25'59"	W048°13'28"	548m	152.9km	356°	Airport with Grass Runway	SIII
19Est Colorado	S20°45'39"	W047°51'43"	723m	119.7km	14°	Airport with Grass Runway	SDES
20Faz 3 Barras	S20°56'54"	W048°11'18"	480m	95.7km	357°	Airport with Grass Runway	SSVY
21Faz Alianca 1	S20°30'19"	W048°02'38"	724m	144.9km	4°	Airport with Grass Runway	FAZALNC1
23Faz Avanhadava	S21°11'22"	W049°56'13"	440m	199.2km	290°	Airport with Solid Runway	SDWH
24Faz B Agudo	S20°48'30"	W048°13'19"	490m	111.4km	355°	Airport with Grass Runway	SDJZ
25Faz Bananeira	S20°34'48"	W049°04'47"	510m	168.1km	324°	Airport with Solid Runway	SDZS
26Faz Barreiro Grande	S20°20'53"	W048°46'31"	566m	175.2km	338°	Airport with Grass Runway	SDWN
27Faz Brumado	S20°25'45"	W048°33'43"	535m	159.4km	344°	Airport with Grass Runway	SDFB
29Faz California 1	S20°25'48"	W048°36'08"	566m	160.5km	342°	Airport with Grass Runway	SDWD
30Faz Cambuhy	S21°37'52"	W048°28'42"	612m	40.9km	299°	Airport with Solid Runway	SDMY
31Faz Campo Grande	S20°15'26"	W048°47'20"	558m	185.1km	338°	Airport with Solid Runway	SDKO
32Faz Constancia	S20°29'19"	W049°11'17"	510m	182.9km	323°	Airport with Grass Runway	SDFC
34Faz Continental	S20°14'10"	W048°39'05"	450m	182.5km	343°	Airport with Grass Runway	SIKX
35Faz Mosquito	S20°44'50"	W047°53'23"	736m	120.5km	12°	Airport with Grass Runway	SDOR
37Faz N São Aparecida	S19°56'55"	W048°35'03"	517m	211.5km	347°	Airport with Grass Runway	SWAU

38Faz Naisa	S20°19'49"	W048°48'36"	530m	178.4km	337°	Airport with Solid Runway	SSNF
39Faz Palmital	S20°41'47"	W048°17'11"	521m	124.5km	353°	Airport with Grass Runway	SIAM
40Faz Paloma	S20°19'17"	W048°50'01"	520m	180.3km	336°	Airport with Grass Runway	SDCW
41Faz Posses Rio Grande	S20°18'39"	W048°58'37"	482m	187.9km	332°	Airport with Grass Runway	SDZT
42Faz São Francisco 1	S20°34'03"	W050°13'49"	438m	257.6km	302°	Airport with Grass Runway	SNQP
43Faz São João 1	S20°11'27"	W049°02'49"	490m	203.0km	332°	Airport with Grass Runway	SDKQ
44Faz São Joao 2	S20°33'24"	W049°17'18"	530m	183.5km	319°	Airport with Grass Runway	SING
45Faz São João 3	S20°44'44"	W047°56'01"	662m	119.8km	10°	Airport with Grass Runway	SDSJ
46Faz São Paulo 1	S20°09'20"	W049°56'05"	505m	262.1km	314°	Airport with Grass Runway	SDIZ
47Faz Sonho Dourado	S20°28'02"	W050°08'32"	525m	256.3km	305°	Airport with Grass Runway	SDLR
48Faz Santa Candida	S21°20'01"	W048°10'16"	623m	53.0km	356°	Airport with Grass Runway	SDSV
49Faz Santa Ines	S20°52'57"	W049°23'33"	550m	166.2km	308°	Airport with Grass Runway	SDJR
50Faz Santa Maria 1	S20°50'56"	W050°04'46"	465m	228.3km	297°	Airport with Grass Runway	SDDJ
51Faz Vassoural	S21°04'22"	W048°01'56"	549m	82.4km	7°	Airport with Grass Runway	SDVS
52Fernandopolis	S20°16'36"	W050°12'50"	500m	275.0km	308°	Airport with Solid Runway	SDFD
53Frigo Estrela	S20°17'41"	W050°24'48"	486m	290.4km	305°	Airport with Solid Runway	SJFF
54Fronteira	S20°16'39"	W049°11'27"	487m	202.3km	327°	Airport with Solid Runway	SSFR
55Frutal	S20°00'17"	W048°57'32"	551m	217.7km	337°	Airport with Solid Runway	SNFU
58IbiporangadaFelicidad	S20°28'02"	W049°31'45"	542m	207.8km	315°	Airport with Grass Runway	SJVC
61Itapolis	S21°35'59"	W048°49'58"	530m	76.1km	288°	Airport with Solid Runway	SDIO
62Ituverava	S20°22'31"	W047°46'07"	623m	163.5km	13°	Airport with Solid Runway	SDIV
63Jaboticabal	S21°13'48"	W048°17'05"	616m	66.3km	346°	Airport with Grass Runway	SDJC
64Jales	S20°17'28"	W050°32'40"	456m	301.9km	303°	Airport with Solid Runway	SDJL
65Marchesan	S21°37'46"	W048°23'38"	592m	33.7km	307°	Airport with Solid Runway	SDME
66Matão	S21°37'23"	W048°21'09"	635m	30.8km	313°	Airport with Grass Runway	SDLY
68Mirassol	S20°48'26"	W049°29'10"	584m	179.1km	308°	Airport with Grass Runway	SDMH
69Monte Alto	S21°15'41"	W048°31'47"	750m	73.4km	326°	Airport with Grass Runway	SDMO
76Planura	S20°07'32"	W048°42'04"	524m	195.8km	342°	Airport with Solid Runway	PLANURA
80São Joaquim Barra	S20°35'36"	W047°50'32"	651m	138.2km	13°	Airport with Grass Runway	SDJO

81São José do Rio Preto	S20°48'58"	W049°24'17"	543m	171.9km	310°	Airport with Solid Runway	SBSR
82Santa Paula	S20°42'14"	W049°23'29"	567m	179.1km	313°	Airport with Grass Runway	SISP
88Us Bonfim	S21°24'22"	W048°18'57"	645m	48.7km	337°	Airport with Grass Runway	USBONFIM
89Us Catanduva	S21°07'37"	W048°50'41"	567m	105.7km	316°	Airport with Grass Runway	SDDV
90Us Colorado	S20°16'37"	W048°10'55"	606m	170.0km	358°	Airport with Grass Runway	SJFH
91Us Mandu	S20°28'56"	W048°22'22"	487m	149.3km	350°	Airport with Grass Runway	SSUX
92Us São Carlos	S21°17'05"	W048°09'48"	585m	58.4km	357°	Airport with Grass Runway	SDWE
93Us São Martinho	S21°20'21"	W048°06'48"	522m	52.3km	2°	Airport with Solid Runway	SDTY
94Us Santa Adelia	S21°19'57"	W048°18'59"	607m	56.3km	340°	Airport with Solid Runway	SDUD
95Us Santa Luiza	S21°30'33"	W048°11'50"	603m	34.1km	349°	Airport with Grass Runway	SJQV
97Votuporanga 1	S20°27'26"	W050°00'09"	508m	245.3km	307°	Airport with Solid Runway	SDVG
AFA	S21°59'07"	W047°19'37"	597m	85.5km	103°	Airport with Solid Runway	Afa
Agricola Taiuva	S21°09'03"	W048°23'18"	613m	77.8km	340°	Outlanding Place	Agricuva
Analandia	S22°09'23"	W047°43'03"	855m	57.5km	132°	Airport with Solid Runway	Analadia
Araraquara	S21°48'41"	W048°08'00"	705m	0.0km	0°	Airport with Solid Runway	SBAQ
Aurifama	S20°44'29"	W050°32'08"	385m	276.0km	295°	Airport with Grass Runway	SIAY
Bariri	S22°04'09"	W048°42'26"	486m	65.8km	244°	Airport with Grass Runway	Bariri
Boa Esperança Sul	S21°52'42"	W048°39'34"	518m	54.9km	262°	Airport with Solid Runway	BoaEsSul
Brotas Sul	S22°13'43"	W048°03'43"	722m	46.8km	171°	Outlanding Place	BrotaSul
Brotas Sul2	S22°15'01"	W048°02'20"	736m	49.6km	169°	Outlanding Place	Brotaul2
Buritirama	S21°05'48"	W050°14'35"	390m	232.6km	290°	Airport with Grass Runway	SIBX
Faz Cresciumal	S22°08'40"	W047°16'47"	596m	95.6km	113°	Airport with Grass Runway	FazCrmal
Faz Sao Carlos	S21°52'55"	W047°46'34"	700m	37.7km	102°	Outlanding Place	FazSalos
Fazenda Alamo	S21°48'55"	W047°54'02"	736m	24.1km	91°	Airport with Solid Runway	Fazenamo
Fazenda Bonanca	S20°40'33"	W051°01'49"	361m	325.9km	292°	Airport with Solid Runway	SDFA
Fazenda Coumbial	S20°10'41"	W048°42'38"	499m	190.5km	342°	Airport with Grass Runway	Fazenal
Fazenda Menucci	S20°45'43"	W050°51'36"	377m	305.9km	292°	Airport with Grass Runway	SDER
Fazenda Menucci Sud	S20°43'24"	W050°58'19"	362m	318.3km	292°	Airport with Grass Runway	SDXO
Fazenda Peixoto	S21°46'52"	W047°53'04"	626m	26.0km	83°	Airport with Solid Runway	Fazenoto

Fazenda Santa Marina	S20°51'01"	W050°46'56"	342m	294.7km	291°	Airport with Solid Runway	Fazenina
Fazenda Santo Angelo	S22°14'43"	W048°15'37"	481m	49.8km	195°	Airport with Solid Runway	Fazenelo
Fazenda Sao Sebastiao	S19°38'12"	W048°47'19"	705m	250.3km	344°	Airport with Solid Runway	Fazeniao
Fazenda Trevo	S20°16'08"	W049°04'49"	489m	197.1km	330°	Airport with Grass Runway	Fazena02
Fazenda Vale Verde	S19°40'19"	W048°59'41"	606m	253.3km	339°	Airport with Solid Runway	Fazenrde
Gaviao Peixoto	S21°45'09"	W048°24'19"	609m	28.9km	283°	Airport with Solid Runway	EMBRAER
Ibitinga	S21°44'50"	W048°51'21"	540m	75.1km	275°	Airport with Solid Runway	SDIG
Itirapina	S22°11'41"	W047°51'42"	776m	50.9km	147°	Airport with Solid Runway	Itapira
Jau	S22°10'55"	W048°28'58"	676m	54.6km	221°	Airport with Grass Runway	Jau
Jau Faz Morro Vermelho	S22°16'20"	W048°36'16"	539m	70.5km	224°	Airport with Solid Runway	SDMV
Leme	S22°13'38"	W047°23'02"	625m	90.0km	121°	Airport with Solid Runway	Leme
Mogi Guacu	S22°13'43"	W046°58'12"	685m	128.7km	111°	Airport with Grass Runway	MogiGacu
Nova Europa	S21°45'35"	W048°35'10"	580m	47.2km	277°	Airport with Grass Runway	NovaEopa
Novo Horizonte	S21°29'52"	W049°14'04"	469m	119.1km	287°	Airport with Grass Runway	SDNH
Pereira Barreto	S20°37'28"	W051°04'51"	353m	333.0km	293°	Airport with Grass Runway	SNXI
Populina - MG	S19°53'03"	W050°30'14"	435m	326.2km	310°	Airport with Solid Runway	SDXX
Pousada Rio das Pedras	S19°33'06"	W048°50'15"	726m	260.7km	344°	Airport with Grass Runway	Pousaras
Regionopolis	S21°39'38"	W049°09'51"	407m	107.9km	279°	Airport with Grass Runway	Regiolis
Santa Fe do Sul	S20°13'32"	W050°58'00"	390m	342.9km	300°	Airport with Solid Runway	SantaSul
Santo Antonio Acaranga	S20°58'54"	W050°31'28"	360m	264.4km	290°	Airport with Solid Runway	SJOW
Sao Carlos	S21°52'25"	W047°54'14"	802m	24.7km	106°	Airport with Solid Runway	SDSC
Ubarana	S21°15'05"	W049°47'47"	396m	183.1km	289°	Airport with Solid Runway	SDTO
Usina Moncoes	S20°51'59"	W050°08'01"	427m	232.4km	296°	Airport with Solid Runway	SSVO
Usina Santa Rita Passa 4	S21°43'25"	W047°39'25"	620m	50.2km	79°	Airport with Grass Runway	Usinasa4
Usina Sao Luis	S21°54'05"	W047°16'37"	610m	89.1km	97°	Airport with Grass Runway	Usinauis



